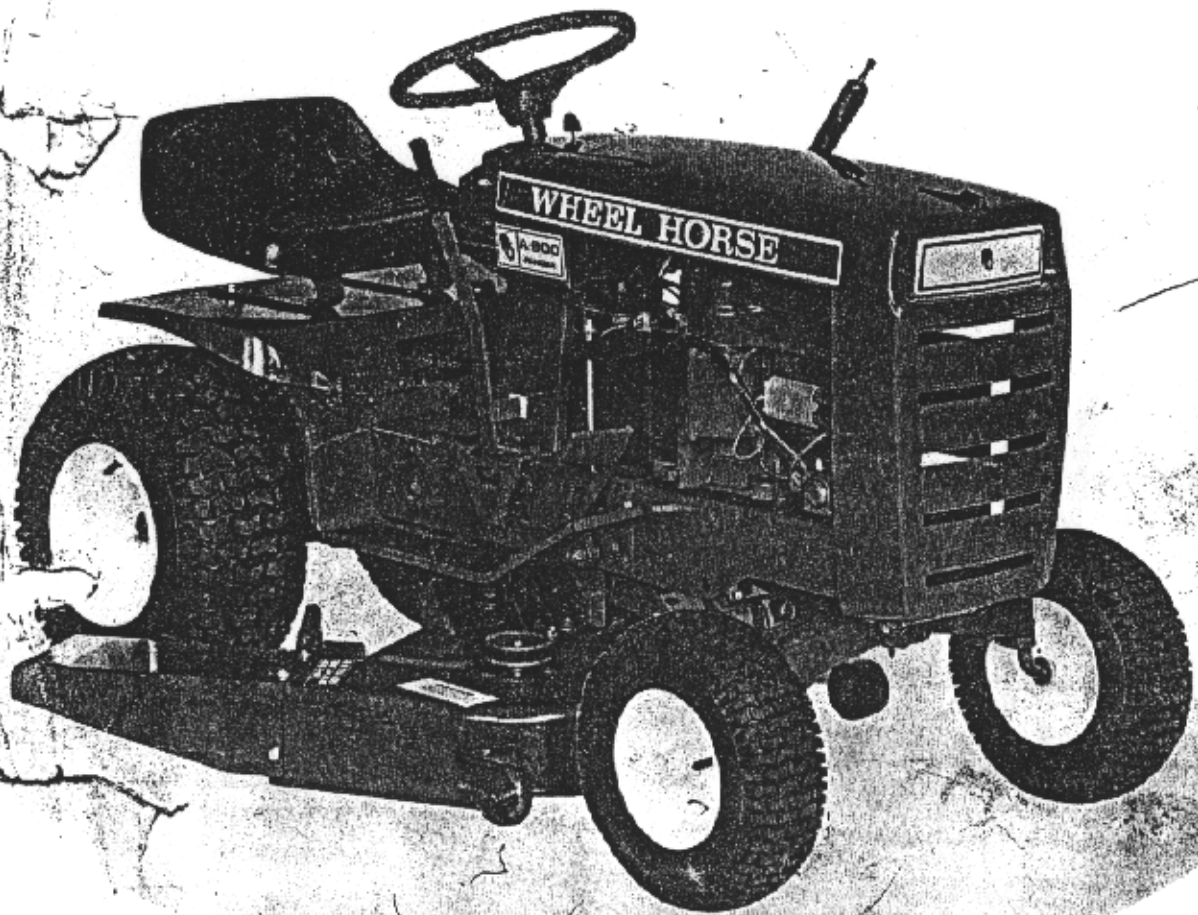


1974 PARTS MANUAL

for



ELECTRIC AND RECOIL MODELS



WHEEL HORSE

lawn & garden tractors

A-800 MOWER PARTS LIST

Parts available only through Authorized Dealers.

When ordering parts always list Part No. and Description.

(Specifications subject to change without notice.)

Item No.	Part No.	Description	No. Req'd.	Item No.	Part No.	Description	No. Req'd.
1	104439	Ass'y. Deck	1	31	900063-4	Bolt — Carriage $\frac{3}{8}$ -16 x 1	2
2	102650	Extension — Chute	1	32	920036-4	Washer — $\frac{3}{8}$ U.S.	2
3	910864-4	Bolt — PHCR $\frac{3}{16}$ -18 x $\frac{3}{8}$	3	33	9629	Ass'y. Roller — Arm	2
4	915112-6	Nut — Eslok $\frac{3}{16}$ -18	3	34	932016-4	Cotter Pin $\frac{1}{8}$ x $\frac{3}{4}$	2
5	8389	Housing — Bearing	2	35	100285	Ass'y. Roller	2
6	103119	Bearing — Integral Shaft $\frac{3}{4}$	2	36	920011-4	Washer — $\frac{1}{2}$ S.A.E.	2
7	900234-9	Bolt — Carriage $\frac{3}{8}$ -16 x 1	8	37	908019-4	Bolt — Hex $\frac{3}{16}$ -18 x 1	2
8	915113-6	Nut — Eslok $\frac{3}{8}$ -16	14	38	915662-4	Nut $\frac{3}{16}$ -18 E.S.	2
9	104373	Cup — Spindle	2	39	103427	Rod — Link	1
10	933211	Roll Pin $\frac{1}{4}$ x $\frac{3}{8}$	4	40	101439	Spring	1
11	6758	Blade — Mower	2	41	920010-4	Washer — $\frac{3}{16}$ S.A.E.	2
12	1336	Washer — Dome	2	42	933154	Roll Pin $\frac{1}{8}$ x $\frac{3}{8}$	2
13	908033-5	Bolt — Hex $\frac{3}{8}$ -16 x $\frac{3}{8}$	2	43	101441	Bearing — Sintered Iron	2
14	101230	Pulley — Blade Drive	2	44	103431	Trunnion	1
15	2844	Washer — Special	2	45	915237-4	Jam Nut — $\frac{3}{16}$ -14	1
16	908032-6	Bolt — Hex $\frac{3}{8}$ -16 x $\frac{3}{4}$	2	46	933505-4	Hairpin	9
17	104176	Housing — Drive Bearing	1	50	8977	Bar — Lift Link	4
18	103711	Bearing — Integral Shaft	1	51	920248	Washer — $\frac{3}{8}$ Nylon	8
19	936021	Snap Ring	1	52	932961-4	Pin — Clevis $\frac{3}{8}$ x $\frac{3}{4}$	8
20	102723	Pulley — Drive — Lower	1	53	100146	Plug Button	1
21	102724	Pulley — Drive — Upper	1	54	8976	Belt — 55" Mower	1
22	937089	Key — #9 Woodruff	2	55	103707	Decal — Warning	1
23	909539-4	Set Screw — $\frac{3}{16}$ -18 x $\frac{3}{8}$	1	56	4570	Decal — Caution	2
24	909862-5	Set Screw — $\frac{3}{16}$ -18 x $\frac{3}{16}$	2	57	104177	Belt — Retainer	1
25	908034-4	Bolt — Hex $\frac{3}{8}$ -16 x 1	2	59	908036-4	Bolt — Hex $\frac{3}{8}$ -16 x $1\frac{1}{2}$	1
26	8978	Bracket	1	60	920083-4	Lockwasher — $\frac{3}{8}$ Plain	1
27	6719	Pulley — Idler	1	61	103470	Washer — Special	1
28	908038-4	Bolt — Hex $\frac{3}{8}$ -16 x 2	1	62	104388	Belt — Engine to Mower	1
30	920009-4	Washer — $\frac{3}{8}$ S.A.E.	2	63	979369	Spacer	1

MODEL NUMBERS

Model and serial numbers are necessary to order parts. Tractor numbers are on a plate attached to the hood stand just below the control panel; engine numbers are on a plate attached to the engine shroud.

TO ORDER PARTS

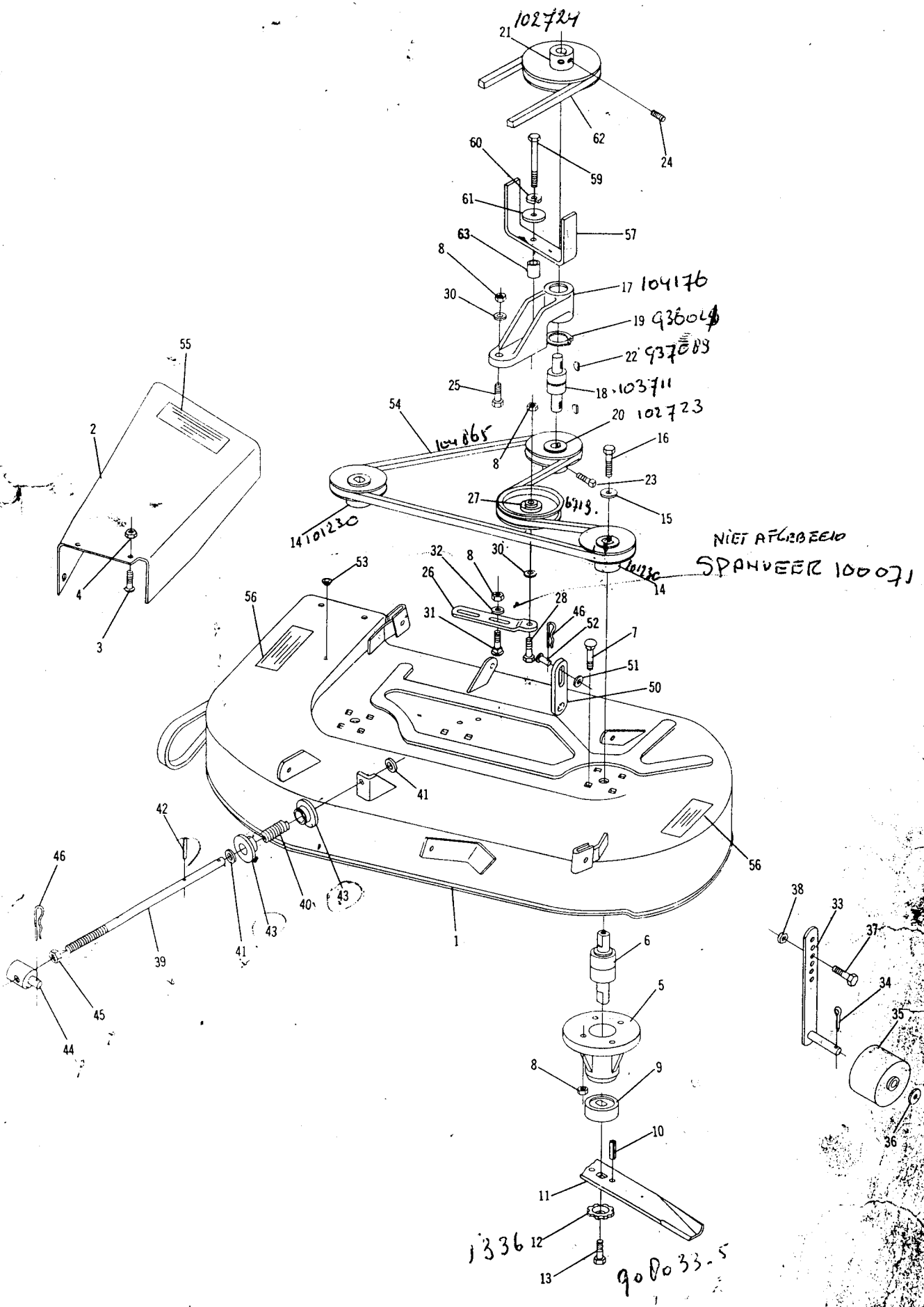
1. Enter model and serial numbers.

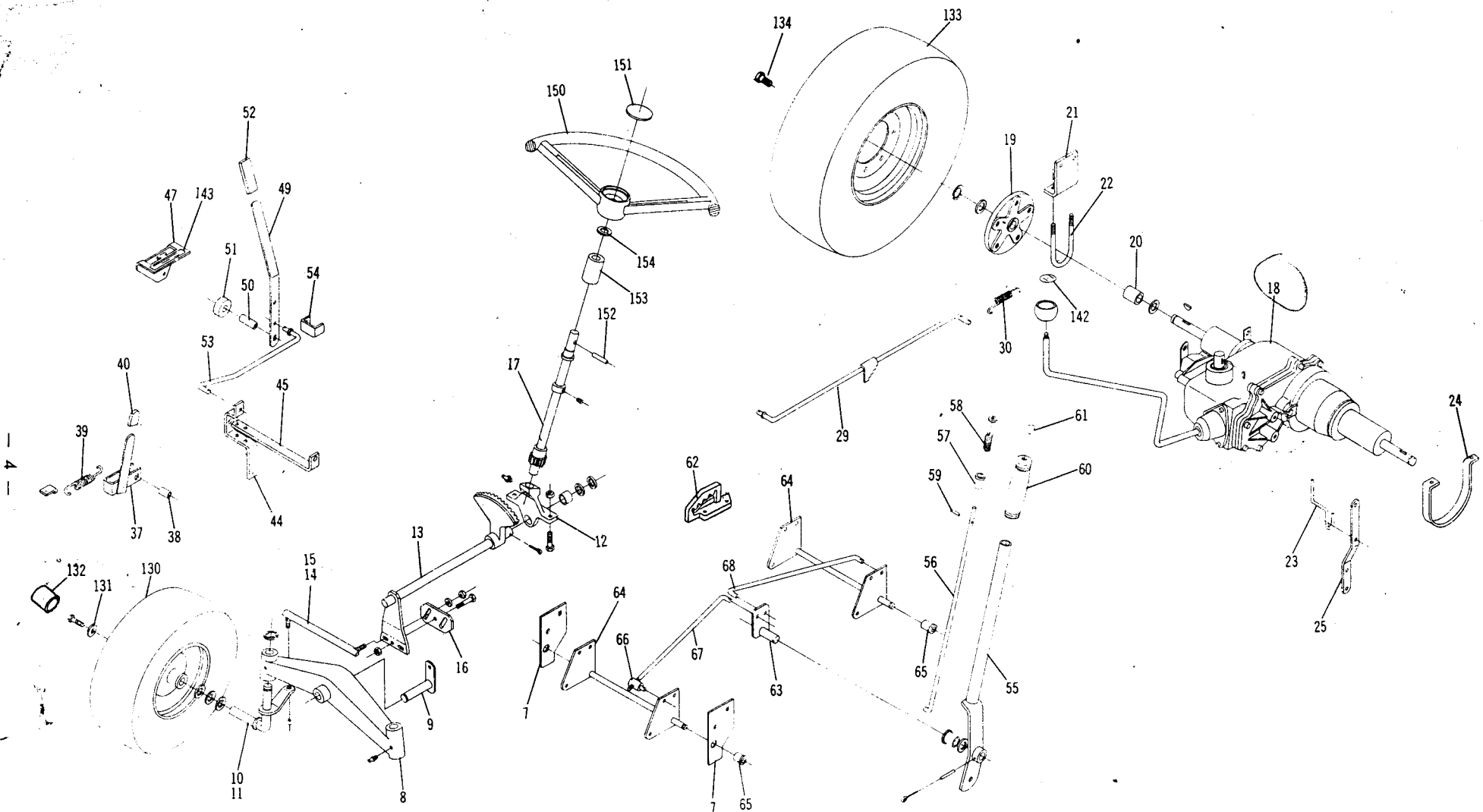
Tractor _____

Engine _____

2. Locate the desired part in the illustration and note its item number.
3. Locate the item number in the parts list. Order by both part number and description.

ORDER ALL PARTS THROUGH YOUR LOCAL AUTHORIZED WHEEL HORSE DEALER.

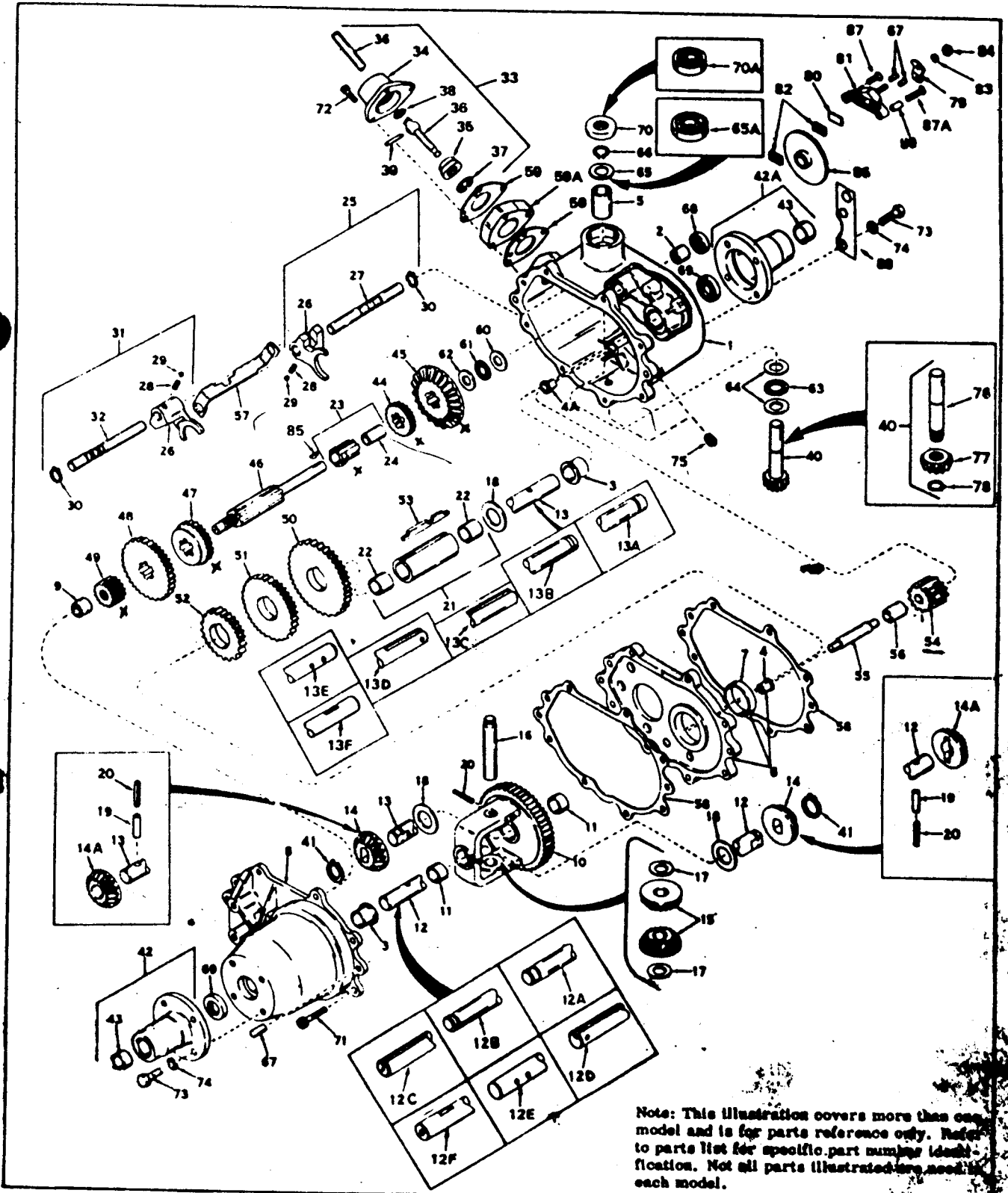




LAUSON-POWER PRODUCTS PARTS DEPOT



PEERLESS "600" SERIES TRANSAXLES



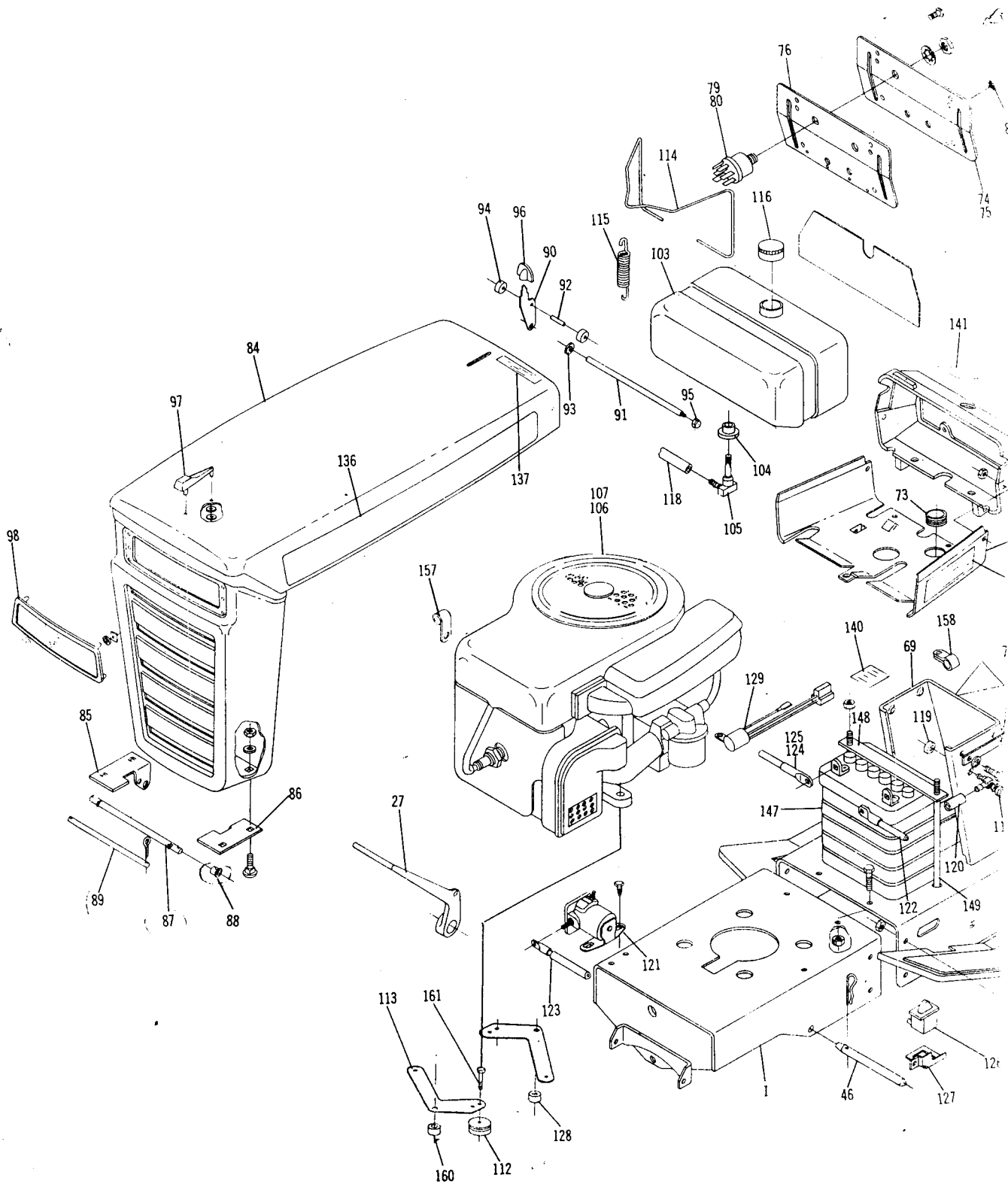
Note: This illustration covers more than one model and is for parts reference only. Refer to parts list for specific part numbers identification. Not all parts illustrated are needed in each model.

Bild-Nr	Best-Nr	Bezeichnung	Bild-Nr	Best-Nr	Bezeichnung
1	77oo51	Gehäuse Modell 6o4B, 6o7A, 612, 617, 622, 622A, 623, 626, 627	23	776o9o	Schaltwelle
			25	784o79	Schaltwelle
			26	784oo4	Gabel
			27	784o83	Schaltwelle
1	77oo63	Gehäuse Modell 623A, 635, 638, 639	28	792o33	Feder
			29	792oo4	Stahlkugel
			3o	792o17	Seegerring
2	78oo86	Lager	31	784o84	Schaltwelle kpl.
3	78oo59	Lager	32	784o85	Schaltwelle
4	78oo6o	Lager	33	784o71 A	Schalthebel
4 A	78oo6o	Lager			Modell 6o4 B
5	78oo61	Lager	33	784222	Schalthebel
6	786o33	Grundplatte			Modell 638
7	78oo62	Lager	33	784112	Schalthebel
8	772o42	Deckel			Modell 6o7A,
9	78oo63	Lager	33	784153	Schalthebel
1o	778o53	Zahnrad			Modell 612 A
11	78oo64	Lager	33	784167	Schalthebel
12 A	774o99	Achse links Modell 6o4B	33	784241	Schalthebel
12 A	774o97	Achse links Modell 6o7 A	33	784191	Schalthebel
12 A	774133	Achse links Modell 612 A	33	7842o2	Schalthebel
12 A	774166	Achse links Modell 617, 635	34	784o88	Hebelgehäuse
12 A	774189	Achse links Modell 622, 622A,	35	784o94	Hebelhalter
12 A	774197	Achse links Modell 623, 623A	36	784o3o	Schalthebel
12 A	774276	Achse links Modell 638	36	784223	Schalthebel
12 B	774221	Achse links Modell 626, 627, 639	36	784154	Schalthebel
13 A	774o98	Achse rechts Modell 6o4B,	36	784168	Schalthebel
13 A	774o96	Achse rechts Modell 6o7 A, 622, 622A	36	784242	Schalthebel
13 A	774134	Achse rechts Modell 612 A	36	784192	Schalthebel
13 A	774167	Achse rechts Modell 617, 635	36	7842o3	Schalthebel
13 A	774198	Achse rechts Modell 623, 623 A	37	792o16	Sicherungsring
13 A	774275	Achse rechts Modell 638	38	792oo1	Sicherungsring
13 B	77422o	Achse rechts Modell 626, 627, 639	39	792o49	Stift
			4o	776o55 B	Welle u. Getriebe kpl. Modell 6o4B, 6o7A, 617, 622, 622A, 623, 623A, 635
14	778o67	Zahnrad			622, 622A, 623, 623A, 635
15	778o68	Kegelrad	4o	7761o2	Welle u. Getriebe kpl. Modell 612A, 626, 627, 638, 639
16	786o34	Zapfen			639
17	78oo65	Scheibe	41	788o38	Sicherungsring
18	78ooool	Scheibe	42	782o31	Getriebegehäuse kpl. Modell 6o4B, 622, 622A, 623 623A 627
2o	792o4o	Splint			
21	786o35	Muffe			
22	78oo66	Bronzelager			

Modell 6o4B, 6o7A, 612A, 617, 622, 622A, 623,
623A, 626, 627, 635, 638, 639

ausgegeben: Jan. 1973
geändert:

Bild-Nr.	Best.-Nr.	Bezeichnung	Bild-Nr.	Best.-Nr.	Bezeichnung
42	782o35	Getriebegehäuse kpl. Modell 6o7 A,	65	78oo96	Scheibe Modell 6o4B, 6o7A, 617, 622, 622A, 623, 623A, 627, 635,
42	782o36 A	Getriebegehäuse kpl. Modell 612A, 626, 639	65 A	78oo93	Scheibe Modell 612A, 626, 638, 639
42	782o48	Getriebegehäuse kpl. Modell 638	66	792o35	Sicherungsring
42	wird vom	Gerätehersteller gel. Modell 635	67	786o26	Stift
42 A	782o31	Getriebegehäuse kpl. Modell 6o4B,	68	788o43	Simmerring
42 A	782o35	Getriebegehäuse kpl. Modell 6o7 A, 622, 622A, 623, 623A	69	788oo9	Simmerring
42 A	782o43	Getriebegehäuse kpl. Modell 626, 639	7o	788o35	Simmerring
42 A	782o44	Getriebegehäuse kpl. Modell 627	71	792o36	Schraube
42 A	782o48	Getriebegehäuse kpl. Modell 638	72	792oo7	Schraube
42 A	wird vom	Gerätehersteller gel. Modell 635	73	792o37	Schraube alle Modelle außer 617
43	78oo66	Lager Modell 6o4B, 6o7A, 622, 622A, 623, 623A, 627,	74	792o29	Scheibe alle Modelle außer 617
43	78oo91	Lager Modell 612A, 626, 638, 639	75	792o39	Schraube
44	778o24	Zahnrad 16 Zähne	76	7761oo	Welle Modell 6o4B, 6o7A, 617, 622 622A, 623, 623A, 635
45	778o57	Kegelrad 33 Zähne	76	7761o3	Welle Modell 612A, 626, 627, 638, 639
46	776o89	Welle Modell 6o4B, 6o7A, 612A, 617, 622, 622A, 623, 626, 627,	77	778o77	Verzahnung
46	776138	Welle Modell 623A, 635, 638, 639	78	788o4o	Ring
47	778o58	Verzahnung 2. u. 3. Gang	79	79ooo8	Hebel Modell 638
48	778o59	Verzahnung 1. u. Rück- wärtsgang	79	79ooo4	Hebel Modell 623A, 639
49	778o6o	Verzahnung 12 Zähne	79	79oo15	Hebel Modell 635
5o	778o61	Verzahnung 36 Zähne	8o	79ooo7	Platte Modell 623A, 635, 638, 639
51	778o62	Verzahnung 34 Zähne	81	79ooo5	Halter Modell 623A, 635, 638, 639
52	778o63	Verzahnung 25 Zähne	82	79ooo6	Bremse Modell 623A, 635, 638, 639
53	792o34 A	Keil	83	792o76	Scheibe Modell 623A, 635, 638, 639
54	778o64	Verzahnung	84	792o75	Mutter Modell 623A, 635, 638, 639
55	776o57	Welle	85	792o45	Keil Modell 623A, 635, 638, 639
56	786o36	Zwischenstück	86	79ooo9	Bremse Modell 623A, 635, 638, 639
57	784o87	Halter	87	792o73	Schraube Modell 623A, 635, 638, 639
58	788o33	Dichtung	87 A	792o85	Schraube Modell 639
59	788oo3	Dichtung	88	785o65	Halter Modell 639
6o	78oo72	Scheibe	89	786o66	Büchse Modell 639
61	78oo71	Drucklager			
62	78oo73	Scheibe			
63	78oo71	Drucklager			
64	78oo72	Scheibe			

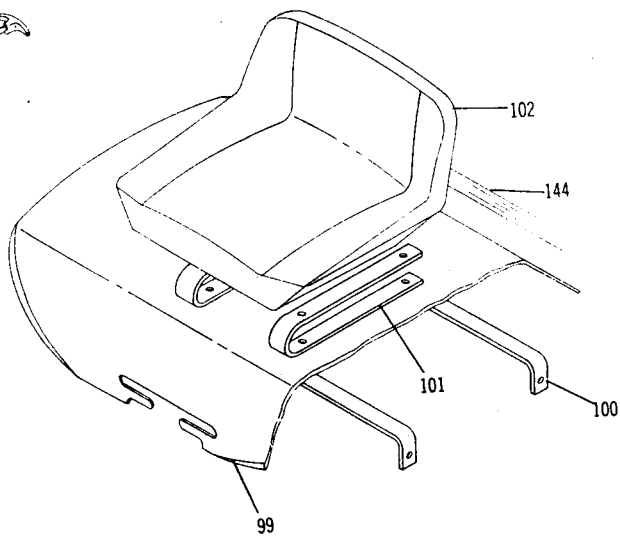


155
156

81



77
78



139

70

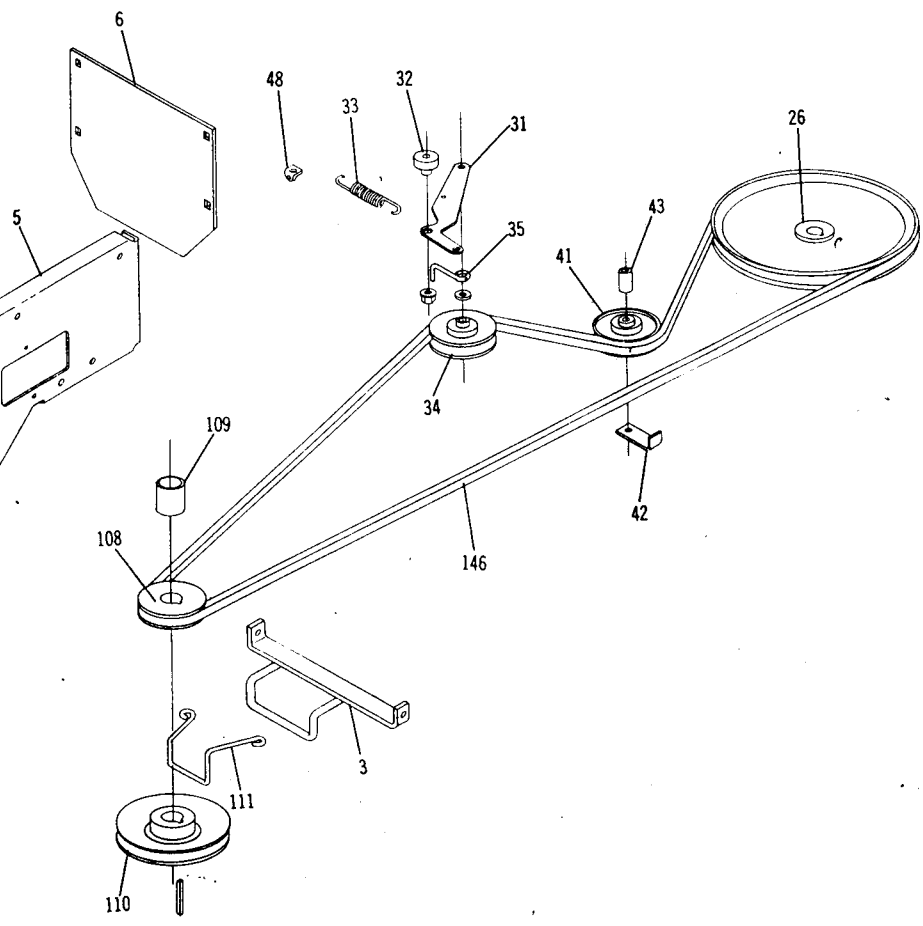
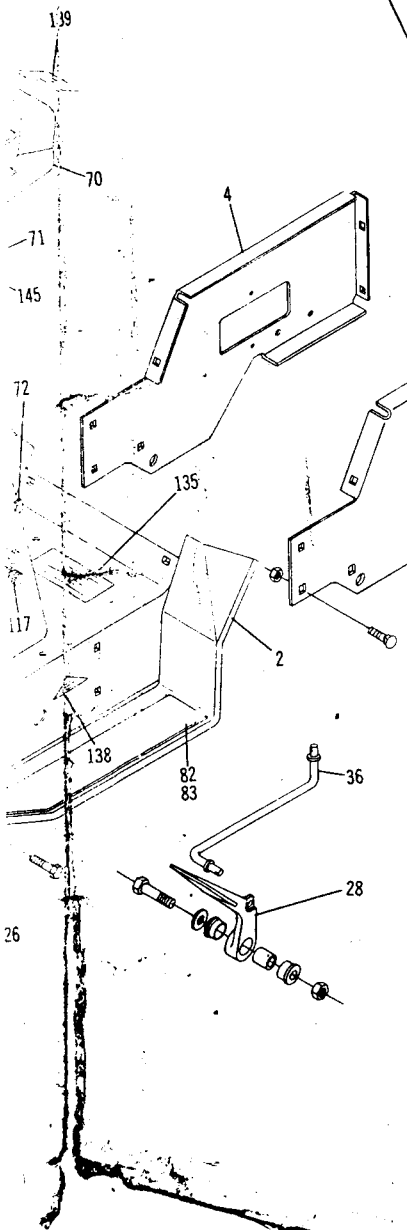
71

145

72

117

26



A-800 ELECTRIC START AND RECOIL START PARTS LIST

Parts available only through Authorized Dealers.

When ordering parts always list Part No. and Description.

(Specifications subject to change without notice.)

Item No.	Part No.	Description	Req'd. Electric	Req'd. Recoil	Item No.	Part No.	Description	Req'd. Electric	Req'd. Recoil
1	103558	Ass'y. Frame — Front	1	1	29	103449	Ass'y. Brake Rod	1	1
2	103483	Ass'y. Frame — Center	1	1		920247	Washer — $\frac{3}{8}$ Nylon	3	3
	908032-4	Bolt — Hex $\frac{3}{8}$ -16 x $\frac{3}{4}$	5	5		932016-4	Cotter Pin — $\frac{1}{8}$ x $\frac{3}{4}$	3	3
	908033-4	Bolt — Hex $\frac{3}{8}$ -16 x $\frac{3}{8}$	2	2	30	103628	Spring — Brake	1	1
	915113-6	Nut — Eslok $\frac{3}{8}$ -16	5	5	31	103413	Lever — Clutch	1	1
	MW2412	Bushing	1	1	32	103409	Spacer — Clutch Link	1	1
3	103582	Ass'y. Belt Bracket	1	1		908036-4	Bolt — Hex $\frac{3}{8}$ -16 x $1\frac{1}{2}$	1	1
4	103404	Panel — Side — R.H.	1	1		102809	Nut — Flange $\frac{3}{8}$ -16	1	1
5	103405	Panel — Side — L.H.	1	1	33	9170	Spring — Clutch	1	1
6	103386	Panel — Rear	1	1					
	900062-4	Bolt — Carriage $\frac{3}{8}$ -16 x $\frac{3}{4}$	11	11	34	8205	Pulley — "V" Idler	1	1
	920009-4	Washer — $\frac{3}{8}$ S.A.E.	11	11	35	103408	Retainer — Belt	1	1
	915113-6	Nut — Eslok $\frac{3}{8}$ -16	11	11		920009-4	Washer — $\frac{3}{8}$ S.A.E.	1	1
7	103385	Plate — Hitch — Front	2	2		908037-4	Bolt — Hex $\frac{3}{8}$ -16 x $1\frac{3}{4}$	1	1
	900062-4	Bolt — Carriage $\frac{3}{8}$ -16 x $\frac{3}{4}$	2	2	36	915113-6	Nut — Eslok $\frac{3}{8}$ -16	1	1
	920009-4	Washer — $\frac{3}{8}$ S.A.E.	2	2		103451	Ass'y. Rod — Clutch	1	1
8	103554	Axle — Front	1	1		920248	Washer — $\frac{3}{8}$ Nylon	2	2
	1030	Fitting — Grease	2	2		932016-4	Cotter Pin — $\frac{1}{8}$ x $\frac{3}{4}$	2	2
	1481	Fitting — Grease 45°	1	1	37	103600	Ass'y. Brake Lever	1	1
9	103557	Ass'y. Pin & Plate	1	1	38	102025	Spacer	1	1
	926715-4	Screw — S.T. $\frac{3}{8}$ -16 x $\frac{3}{4}$	1	1		900066-4	Bolt — Carriage $\frac{3}{8}$ -16 x $1\frac{3}{4}$	1	1
10	5630	Ass'y. Spindle — R.H.	1	1	39	102809	Nut — Flange $\frac{3}{8}$ -16	1	1
11	5631	Ass'y. Spindle — L.H.	1	1		103628	Spring	1	1
	5618	E-Ring	3	3	40	2534	Clip — Spring	1	1
12	6396	Support — Steering	1	1	41	6820	Grip	1	1
	6397	Bushing	1	1	42	7434	Pulley — Flat Idler	1	1
	1030	Fitting — Grease	1	1	43	101415	Retainer — Belt	1	1
	908034-4	Bolt — Hex $\frac{3}{8}$ -16 x 1	1	1		6872	Spacer	1	1
	915113-6	Nut — Eslok $\frac{3}{8}$ -16	1	1		908040-4	Bolt — Hex $\frac{3}{8}$ -16 x $2\frac{1}{2}$	1	1
13	100139	Ass'y. — Steering Shaft Lower	1	1	44	915113-6	Nut — Eslok $\frac{3}{8}$ -16	1	1
	5210	Washer — Shim (.015)	1	1	45	103388	Bar — Bell Crank — Clutch	1	1
	1278	Washer — Shim (.050)	1	1		103387	Bar — Locating	1	1
	932035-4	Cotter Pin — $\frac{3}{16}$ Dia. x $1\frac{1}{4}$	1	1		908034-4	Bolt — Hex $\frac{3}{8}$ -16 x 1	2	2
14	1272	Assembly Ball Joint — R.H.	1	1	46	915113-6	Nut — Eslok $\frac{3}{8}$ -16	2	2
15	1773	Assembly Ball Joint — L.H.	1	1		104211	Rod — Bracket Pivot	1	1
	918002-6	Nut — Eslok $\frac{3}{8}$ -24	5	5	47	933512-4	Hairpin	2	2
	920009-4	Washer — $\frac{3}{8}$ S.A.E.	2	2	48	103412	Bracket — Clutch	1	1
16	18065	Plate — Cam — Steering	1	1		2534	Clip — Spring	1	1
	908182-4	Bolt — Hex $\frac{3}{8}$ -24 x $\frac{3}{8}$	1	1	49	908034-4	Bolt — Hex $\frac{3}{8}$ -16 x 1	2	2
17	104005	Ass'y. Steering Shaft — Upper	1	1		915113-6	Nut — Eslok $\frac{3}{8}$ -16	2	2
	909848-5	Set Screw — Eslok $\frac{1}{4}$ -20 x $\frac{1}{4}$	1	1	50	103414	Handle — Clutch Lever	1	1
	1065	Collar	1	1	51	7893	Spacer	1	1
	101442	Bearing — Sintered Iron	1	1		103687	Bumper — Rubber	1	1
18	103690	Ass'y. Transmission	1	1		920011-4	Washer — $\frac{1}{2}$ S.A.E.	1	1
	908017-4	Bolt — Hex $\frac{5}{16}$ -18 x $\frac{3}{4}$	5	5	52	908036-4	Bolt — Hex $\frac{3}{8}$ -16 x $1\frac{1}{2}$	1	1
	920082-4	Lockwasher — $\frac{5}{16}$ Plain	2	2	53	915113-6	Nut — Eslok $\frac{3}{8}$ -16	1	1
	908019-4	Bolt — Hex $\frac{5}{16}$ -18 x 1	1	1		103712	Grip	1	1
	920008-4	Washer — $\frac{5}{16}$ S.A.E.	1	1		103453	Ass'y. Mower Clutch Rod	1	1
	915112-6	Nut — Eslok $\frac{5}{16}$ -18	4	4	54	920248	Washer — $\frac{3}{8}$ Nylon	2	2
19	103334	Hub — Wheel	2	2		933503-4	Hairpin — $\frac{1}{16}$ x $1\frac{1}{8}$	2	2
	937017	Key — #11 Woodruff $\frac{3}{16}$ x $\frac{3}{8}$	2	2		104064	Bracket — Switch Trip	1	1
	1278	Washer — Shim (.050)	4	4		910864-4	Bolt — Pan Head $\frac{3}{8}$ -18 x $\frac{3}{8}$	1	1
	936125	Snap Ring	2	2	55	915112-6	Nut — Eslok $\frac{5}{16}$ -18	1	1
20	103696	Spacer — R.H. Wheel	1	1	56	8124	Ass'y. Lift Lever	1	1
21	103580	Bracket — Trans. Mtg.	1	1	57	8129	Rod — Latch Lift Lever	1	1
	908032-4	Bolt — Hex $\frac{3}{8}$ -16 x $\frac{3}{4}$	2	2	58	8130	Retainer — Spring	1	1
	915113-6	Nut — Eslok $\frac{3}{8}$ -16	2	2	59	3624	Spring	1	1
22	103428	"U" Bolt — Axle Mounting	1	1	60	933148	Roll Pin — $\frac{1}{8}$ x $\frac{1}{2}$	1	1
	102809	Nut — Flange $\frac{3}{8}$ -16	2	2	61	6542	Grip — Handle	1	1
23	6441	Retainer — Belt	1	1	62	3680	Cap — Latch Rod	1	1
24	103579	Girth — Transmission	1	1		103363	Quadrant — Height Control	1	1
25	103383	Bar — Transmission Support	1	1		903034-4	Bolt — Hex $\frac{3}{8}$ -16 x 1	2	2
26	103339	Pulley — Transmission	1	1	63	915113-6	Nut — Eslok $\frac{3}{8}$ -16	2	2
	909540-4	Set Screw — Sq. Hd. $\frac{5}{16}$ -18 x $\frac{1}{2}$	2	2		103377	Ass'y. Lift Arm	1	1
	937086	Key — #6 Woodruff $\frac{3}{16}$ x $\frac{5}{8}$	1	1	64	933216	Spirol Pin — $\frac{1}{4}$ x $1\frac{3}{8}$	1	1
	102871	Knob	1	1	65	932013-4	Cotter Pin — $\frac{3}{32}$ x 2	1	1
27	103355	Pedal — Brake	1	1		1278	Washer — Shim (.050)	1	1
28	103576	Pedal — Clutch	1	1	66	103380	Ass'y. Lift — Bell Crank	2	2
	6254	Bushing	4	4	67	6230	Bearing — Flange	4	4
	6264	Spacer	2	2	68	5701	"E" Ring — $\frac{1}{2}$ " Shaft	4	4
	908060-4	Bolt — Hex HD. $\frac{1}{2}$ -13 x $1\frac{3}{4}$	2	2		6739	Trunnion	1	1
	915115-6	Nut — Eslok $\frac{1}{2}$ -13	2	2		103446	Lift Rod — Front	1	1
	920011-4	Washer $\frac{1}{2}$	2	2		103447	Lift Rod — Rear	1	1
						920248	Washer — $\frac{3}{8}$ Nylon	4	4
						932016-4	Cotter Pin — $\frac{1}{8}$ x $\frac{3}{4}$	3	3
						933504-4	Hairpin	1	1

A-800 ELECTRIC START AND RECOIL START PARTS LIST

Parts available only through Authorized Dealers.

When ordering parts always list Part No. and Description.

(Specifications subject to change without notice.)

Item No.	Part No.	Description	Req'd. Electric	Req'd. Recoil	Item No.	Part No.	Description	Req'd. Electric	Req'd. Recoil
	915663-4	Nut — Hex $\frac{3}{8}$ -16 E. S.	1	1		908183-6	Bolt — Nylok $\frac{3}{8}$ -24 x 1	1	1
69	103566	Channel — Hoodstand	1	1	109	103578	Spacer	1	1
	926694-4	Screw — S.T. $\frac{3}{16}$ -18 x $\frac{3}{8}$	5	5	110	9469	Pulley — Mower Drive	1	1
70	5450	Housing — Control Panel	1	1	111	104046	Guide — Belt	1	1
71	104108	Support — Fuel Tank	1	1	112	104045	Ass'y. Engine Mount	4	4
	5606	Tape — Hood Insulator	1	1	113	104178	Strap — Torque	2	2
	960152-4	Bolt — $\frac{1}{4}$ -20 x $\frac{3}{8}$ Whizlock	4	4	114	100147	Wire — Fuel Tank	1	1
	915111-6	Nut — Eslok $\frac{1}{4}$ -20	4	4	115	6949	Spring	1	1
72	9775	Spacer	2	2	116	102321	Cap — Fuel Tank	1	1
	926720-4	Screw — S.T. $\frac{3}{16}$ -18 x $\frac{3}{4}$	4	4	117	8023	Ass'y. Valve — Fuel	1	1
73	101971	Grömmet — Rubber	1	1		100748	Body	1	1
74	104023	Plate — Instrument Dash	1	0		100749	Stem	1	1
75	103398	Plate — Instrument Dash	0	1		100750	Nut	1	1
	102168	Screw — PHCRST #10-16	4	4	118	8024	Hose — Fuel 5.5"	1	1
	5442	Speed Nut #10-16	4	4		950154	Clamp — Corbin	2	2
76	101841	Plate — Back Up	1	1	119	5189	Spacer — Valve	1	1
77	103519	Ass'y. Control — Throttle	1	1	120	9147	Hose — Fuel 14"	1	1
78	103577	Ass'y. Control — Choke	1	1	121	8658	Solenoid	1	0
	8713	Screw — PHCR #10-24 x $\frac{3}{8}$	4	4		104055	Screw — S.T. $\frac{1}{4}$ -20 x $\frac{3}{4}$	2	0
	915964-4	Nut — Keps #10-24	4	4	122	3666	Wire — Battery To Ground	1	0
	102185	Knob — Throttle	1	1	123	8655	Wire — Solenoid To Starter	1	0
	102186	Knob — Choke	1	1	124	103816	Wiring Harness	1	0
79	103991	Switch — Ignition	1	0	125	104115	Wiring Harness	0	1
80	102820	Switch — Ignition	0	1		3023	Clip — Wire	2	2
	920160-4	Lockwasher $\frac{3}{8}$	1	1	126	103480	Switch — Safety	2	2
	101884	Nut — Hex Special $\frac{5}{8}$ -32	1	1	127	104117	Bracket — Switch	1	1
	101446	Insulation — Controls Nylon	1	1	128	100687	Spacer	1	1
81	935090-4	Plug Button — Switch	2	0	129	104107	Ignition Interlock	0	1
82	103468	Pad — Foot Rest — R.H.	1	1		908001-4	Bolt — Hex $\frac{1}{4}$ -20 x $\frac{1}{2}$	0	1
83	103469	Pad — Foot Rest — L.H.	1	1		915111-6	Nut — Hex $\frac{1}{4}$ -20 E.S.	0	1
84	9698	Ass'y. Hood	1	1	130	8187	Ass'y. Wheel & Tire Front	2	2
85	9766	Bracket — Grille Pivot R.H.	1	1		8118	Wheel — 6" Integral Hub	1	1
86	9767	Bracket — Grille Pivot L.H.	1	1		8188	Tire — 13 x 5.00-6	1	1
	900037-4	Bolt — Carriage $\frac{3}{16}$ -18 x $\frac{3}{4}$	4	4		920015-4	Washer $\frac{3}{4}$	2	2
	920008-4	Nut — Eslok $\frac{3}{16}$ -18	4	4		5210	Washer (.015)	2	2
	920008-4	Washer — $\frac{3}{16}$ S.A.E.	2	2		1278	Washer (.050)	2	2
87	101452	Rod — Grille Pivot	1	1	131	2844	Washer Hub	2	2
	100393	Ring — Retainer	2	2		908033-5	Bolt — Eslok $\frac{3}{8}$ -16 x $\frac{7}{8}$	2	2
88	5457	Bushing — Nylon	2	2	132	103634	Hub Cap	2	2
89	9707	Rod — Pivot Stop	1	1	133	100226	Ass'y. Wheel & Tire Rear	2	2
	932006-4	Cotter Pin $\frac{1}{16}$ x $\frac{1}{2}$	2	2		100078	Tube — 18 x 8.50-8	1	1
90	5467	Lever — Hood Latch	1	1		100227	Wheel	1	1
91	5522	Rod — Hood Latch	1	1		8191	Tire — 18 x 8.50-8	1	1
92	933183	Roll Pin $\frac{1}{8}$ x $\frac{3}{8}$	1	1	134	102600	Lug Bolt — Wheel $\frac{3}{8}$ -20	10	10
93	5466	Speed Nut $\frac{1}{4}$ Push On	2	2	135	103567	Decal — Caution	1	1
94	5468	Roller — Steel	2	2	136	102831	Decal — Hood Wheel Horse	2	2
95	915932-4	Nut — High Crown #10-24	2	2	137	103568	Decal — RD. OP. Manual	1	1
96	5469	Knob	1	1	139	102948	Decal — Hand Lift	1	1
97	5438	Ornament — Hood	1	1	140	103435	Decal — Parking Brake	1	1
	5437	Speed Nut $\frac{1}{8}$ Push On	2	2	141	102859	Decal — PTO	1	1
	100646	Washer — Rubber	2	2	142	102847	Decal — 4-Speed	1	1
98	7416	Plate — Escutcheon	1	1	143	103442	Decal — Off/On	1	1
	7721	Clip — Tinnerman	4	4	144	103174	Decal — Wheel Horse — Fender	1	1
	100648	Washer — Rubber	4	4	145	103826	Decal — Ranger A-800	2	2
99	103578	Fender	1	1	146	103522	Belt — Transmission	1	1
100	103991	Support — Fender	2	2	147	100503	Battery	1	0
101	103148	Spring — Seat	2	2		100438	Battery Cap	6	0
	908015-4	Bolt — Hex $\frac{3}{16}$ -18 x $\frac{1}{4}$	4	4		920007-4	Washer $\frac{1}{4}$ S.A.E.	4	0
	915112-6	Nut — Eslok $\frac{3}{16}$ -18	4	4		908003-4	Bolt — Hex $\frac{1}{4}$ -20 x $\frac{3}{4}$	2	0
102	100780	Seat	1	1		915111-6	Nut — Eslok $\frac{1}{4}$ -20	2	0
	908017-4	Bolt — Hex $\frac{3}{16}$ -18 x $\frac{3}{4}$	4	4	148	5851	Strap — Battery	1	0
	920082-4	Lockwasher — $\frac{3}{16}$ Plain	4	4	149	8107	Hook — Battery Strap	2	0
	926715-4	Screw — S.T. $\frac{3}{8}$ -16 x $\frac{3}{4}$	4	4		915111-6	Nut — Eslok $\frac{1}{4}$ -20	2	0
103	104067	Assembly Fuel Tank	1	1	150	102715	Steering Wheel	1	1
104	104047	Bushing	1	1	151	102856	Insert — Steering Wheel	1	1
105	104071	Fitting — Fuel Tank	1	1	152	933221	Spirol Pin — $\frac{1}{4}$ x 2	1	1
106	103693	Engine — 8 H.P. Lauson Electric	1	0	153	104007	Collar	1	1
107	104073	Engine — 8 H.P. Lauson Recoil	0	1	154	7896	Washer — Bowed	1	1
	920008-4	Washer — $\frac{3}{16}$ S.A.E.	3	3	155	102801	Key — Ignition Switch	0	1
	920082-4	Lockwasher — $\frac{3}{16}$ Plain	2	2	156	7262	Key — Ignition Switch	1	0
	926701-4	Screw — S.T. $\frac{3}{16}$ -18 x 2	2	2	157	8830	Clip — Wiring Harness	1	1
	908026-4	Bolt — Hex $\frac{3}{16}$ -18 x 2 $\frac{3}{4}$	2	2	158	101861	Clamp — Fuel Hose	1	1
	915112-6	Nut — Eslok $\frac{3}{16}$ -18	2	2	160	9140	Spacer	1	1
108	103338	Pulley — Engine	1	1	161	908035-4	Bolt — Hex $\frac{3}{8}$ -16 x 1 $\frac{1}{4}$	1	1
	1349	Key	1	1		915663-4	Nut — Eslok $\frac{3}{8}$ -16	2	2
	2844	Washer	1	1		911422	Bolt — Button Hd. $\frac{3}{8}$ -16 x 1 $\frac{1}{4}$	1	1

TECUMSEH TRANSAXLE

MODEL NUMBER: 617

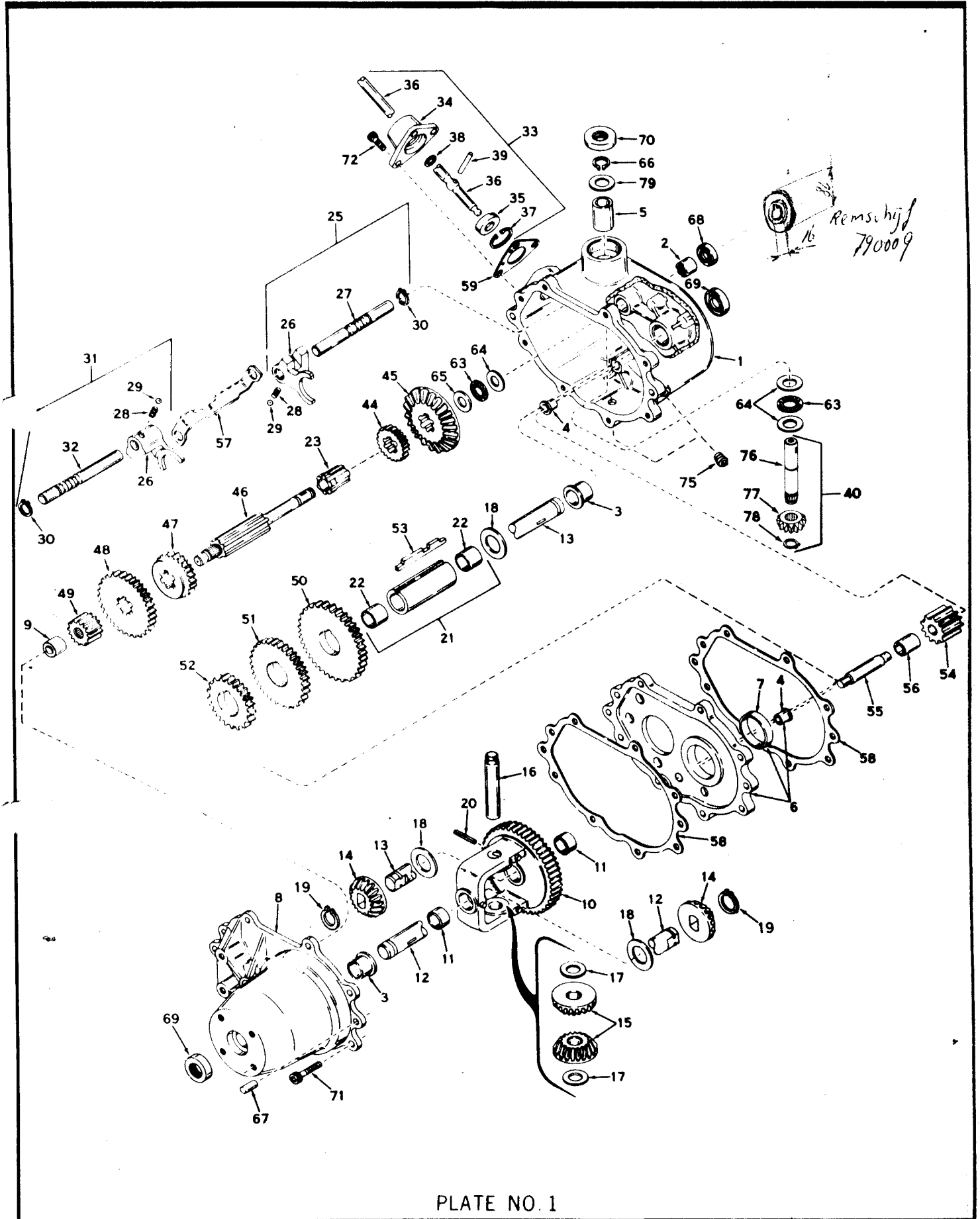


PLATE NO. 1

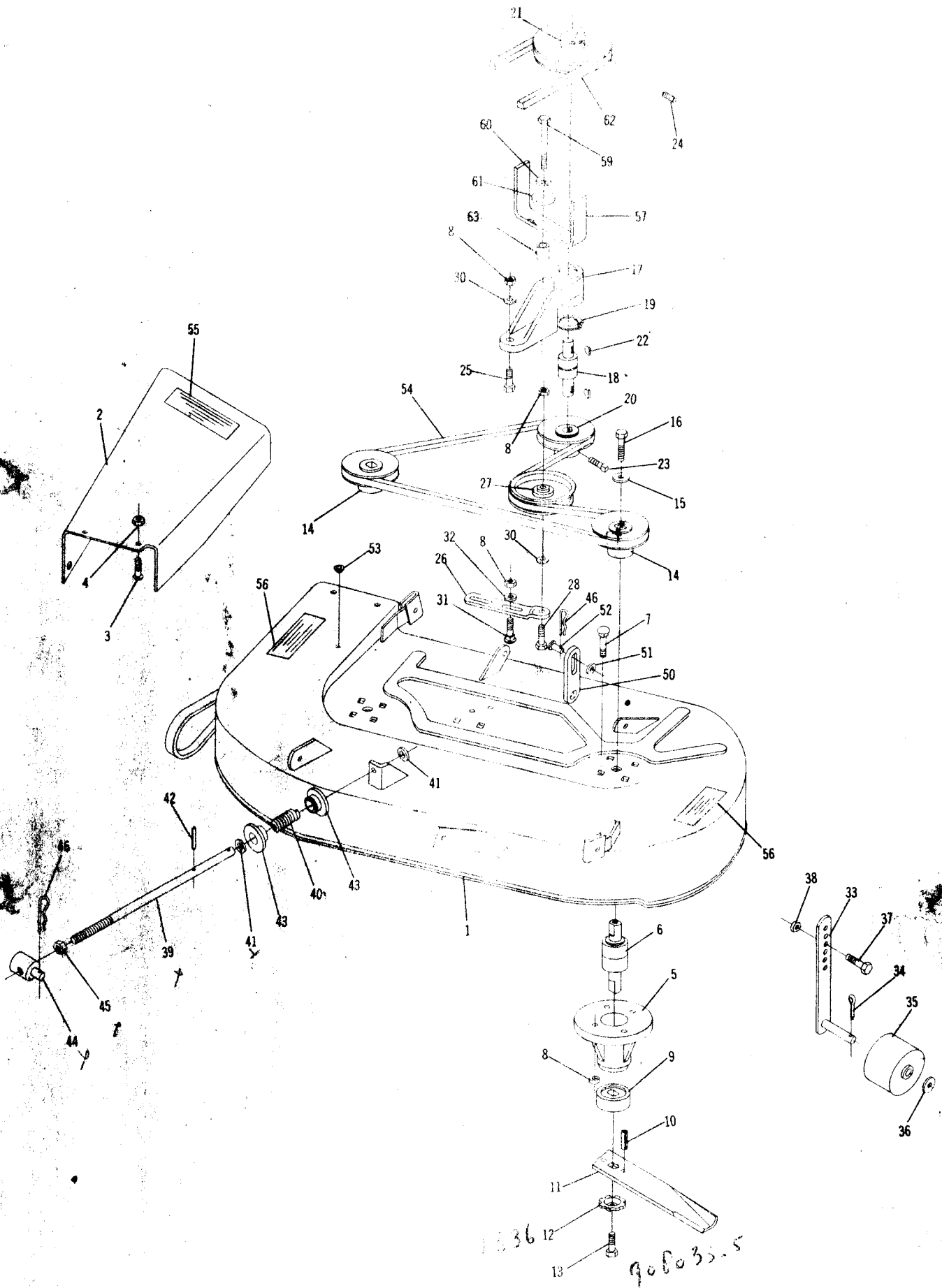
PARTS LIST

TECUMSEH TRANSAXLE

MODEL NUMBER: 617

Ref. No.	Part No.	Part Name
1	770051	Case Assy., Transaxle (Incl. Nos. 2 thru 5)
2	780086	Bearing, Needle
3	780059	Bearing, Bronze
4	780060	Bearing, Bronze
5	780061	Bearing, Bronze
6	786033	Plate Assy., Center (Incl. Nos. 4 & 7)
7	780062	Bearing, Bronze
8	772042	Cover Assy., Transaxle (Incl. Nos. 3 & 9)
9	780063	Bearing, Needle
10	778053	Gear Assy., Differential (Incl. No. 11)
11	780064	Bearing, Bronze
12	774166	Axle, Left hand
13	774167	Axle, Right hand
14	778067	Gear, Bevel
15	778068	Pinion, Bevel
16	786034	Pin, Drive
17	780065	Washer, Thrust
18	780001	Washer, Thrust
19	788038	Ring, Snap
20	792040	Pin, Roll
21	786035	Sleeve Assy., Countershaft (Incl. No. 22)
22	780066	Bearing, Bronze
23	776090	Shaft, Idler
25	784079	Rod Assy., Shift (1st & Rev.) (Incl. Nos. 26 thru 30)
26	784004	Fork, Shift
27	784083	Rod, Shift
28	792003	Spring
29	792004	Ball, Steel
30	792017	Ring, Snap
31	784084	Rod Assy., Shift (2nd & 3rd) (Incl. Nos. 26, 28, 29, 30 & 32)
32	784085	Rod, Shift
33	784167	Lever & Housing Assy., Shift (Incl. Nos. 34 thru 39)
34	784088	Housing, Shift lever

Ref. No.	Part No.	Part Name
35	784094	Keeper, Shift lever
36	784168	Lever, Shift
37	792016	Ring, Snap
38	792001	Ring, Quad
39	792002	Pin, Roll
40	776055B	Shaft & Gear Assy., Input (Incl. Nos. 76, 77 & 78)
44	778024	Gear (16 teeth)
45	778057	Gear, Bevel (33 teeth)
46	776089	Shaft, Shifter & Brake
47	778058	Gear, Shifting (2nd & 3rd)
48	778059	Gear, Shifting (1st & Rev.)
49	778060	Gear, Spur (12 teeth)
50	778061	Gear, Countershaft drive (39 teeth)
51	778062	Gear, Countershaft (34 teeth)
52	778063	Gear, Countershaft (25 teeth)
53	792034A	Key, Countershaft
54	778064	Idler, Reverse
55	776057	Shaft, Reverse idler
56	786036	Spacer, Reverse idler
57	784087	Stop, Shifter
58	788033	Gasket, Case & Cover
59	788003	Gasket, Shift lever housing
63	780071	Bearing, Thrust
64	780072	Washer, Thrust
65	780073	Washer, Thrust
66	792035	Ring, Snap
67	786026	Pin, Dowel
68	788043	Seal, Oil
69	788009	Seal, Oil
70	788035	Seal, Oil
71	792036	Screw, Socket hd. cap, 1/4-20 x 1-1/4
72	792007	Screw, Socket hd. cap, 1/4-20 x 3/4
75	792039	Plug, Pipe, 1/8"
76	776100	Shaft, Input
77	778077	Pinion, Input
78	788040	Ring, Retaining
79	780096	Washer, Thrust
	692592	Owners Parts List



Parts and Accessories
 When ordering parts, specify Part No. and Description.
 (Specify quantity, size, etc., if necessary.)

Item No.	Part No.	Description	No. Req'd	Item No.	Part No.	Description	No. Req'd
1	104439	Ass'y. Deck		31	908014	Bolt - Carriage $\frac{3}{8}$ -16 x 1	2
2	102650	Extension - Chute		31	920014	Washer - $\frac{1}{8}$ U.S.	2
3	910864-4	Bolt - PHCR $\frac{5}{16}$ -18 x $\frac{5}{8}$		31	9679	Ass'y. Roller - Arm	2
4	915112-6	Nut - Eslok $\frac{5}{16}$ -18		31	921014	Cotter Pin $\frac{1}{8}$ x $\frac{3}{4}$	2
5	8389	Housing - Bearing		31	11015	Ass'y. Roller	2
6	103119	Bearing - Integral Shaft $\frac{3}{4}$		31	920014	Washer - $\frac{1}{2}$ S.A.E.	2
7	900234-9	Bolt - Carriage $\frac{3}{8}$ -16 x 1		37	908019-4	Bolt - Hex $\frac{5}{16}$ -18 x 1	2
8	915113-6	Nut - Eslok $\frac{3}{8}$ -16		38	915652-4	Nut $\frac{3}{16}$ -18 E.S.	2
9	104373	Cup - Spindle		39	103427	Rod - Link	1
10	933211	Roll Pin $\frac{1}{4}$ x $\frac{5}{8}$		40	101432	Spring	1
11	6758	Blade - Mower		41	920019-4	Washer - $\frac{7}{16}$ S.A.E.	2
12	1336	Washer - Dome		42	933154	Roll Pin $\frac{1}{8}$ x $\frac{7}{8}$	
13	908033-5	Bolt - Hex $\frac{3}{8}$ -16 x $\frac{7}{8}$		43	101441	Bearing - Sintered I	2
14	101230	Pulley - Blade Drive		44	103431	Trunnion	1
15	2844	Washer - Special		45	915237-4	Jam Nut - $\frac{7}{16}$ -14	1
16	908032-6	Bolt - Hex $\frac{3}{8}$ -16 x $\frac{3}{4}$		45	933505-4	Hairpin	9
17	104176	Housing - Drive Bearing		50	8977	Bar - Lift Link	4
18	103711	Bearing - Integral Shaft		51	920248	Washer - $\frac{3}{8}$ Nylon	8
19	936011	Snap Ring		52	932961-4	Pin - Clevis $\frac{3}{8}$ x $\frac{3}{4}$	8
20	102723	Pulley - Drive - Lower		53	100146	Plug Button	1
21	102724	Pulley - Drive - Upper		54	8976	Belt - 55" Mower	1
22	937049	Key - #9 Woodruff		55	103707	Decal - Warning	1
23	909539-4	Set Screw - $\frac{5}{16}$ -18 x $\frac{3}{8}$		56	4570	Decal - Caution	2
24	909862-5	Set Screw - $\frac{5}{16}$ -18 x $\frac{5}{16}$		57	104177	Belt - Retainer	1
25	908034-4	Bolt - Hex $\frac{3}{8}$ -16 x 1		59	908036-4	Bolt - Hex $\frac{3}{16}$ -16 x $1\frac{1}{2}$	1
26	8978	Bracket		60	920083-4	Lockwasher - $\frac{3}{8}$ Plain	
27	6719	Pulley - Idler		61	103470	Washer - Special	
28	908038-4	Bolt - Hex $\frac{3}{8}$ -16 x 2		62	104388	Belt - Engine to Mower	
29	920039-4	Washer - $\frac{3}{8}$ S.A.E.		63	979369	Spacer	

MODEL NUMBERS

Model and serial numbers are necessary to order parts. Tractor numbers are on a plate attached to the hood stand just below the control panel; engine numbers are on a plate attached to the engine shroud.

TO ORDER PARTS

1. Enter model and serial numbers.

Tractor _____

Engine _____

2. Locate the desired part in the illustration and note its item number.
3. Locate the item number in the parts list. Order by both **part number** and **description**.

ORDER ALL PARTS THROUGH YOUR LOCAL AUTHORIZED WHEEL HORSE DEALER.